



# eZintegrations™

CONNECT ANY SYSTEM



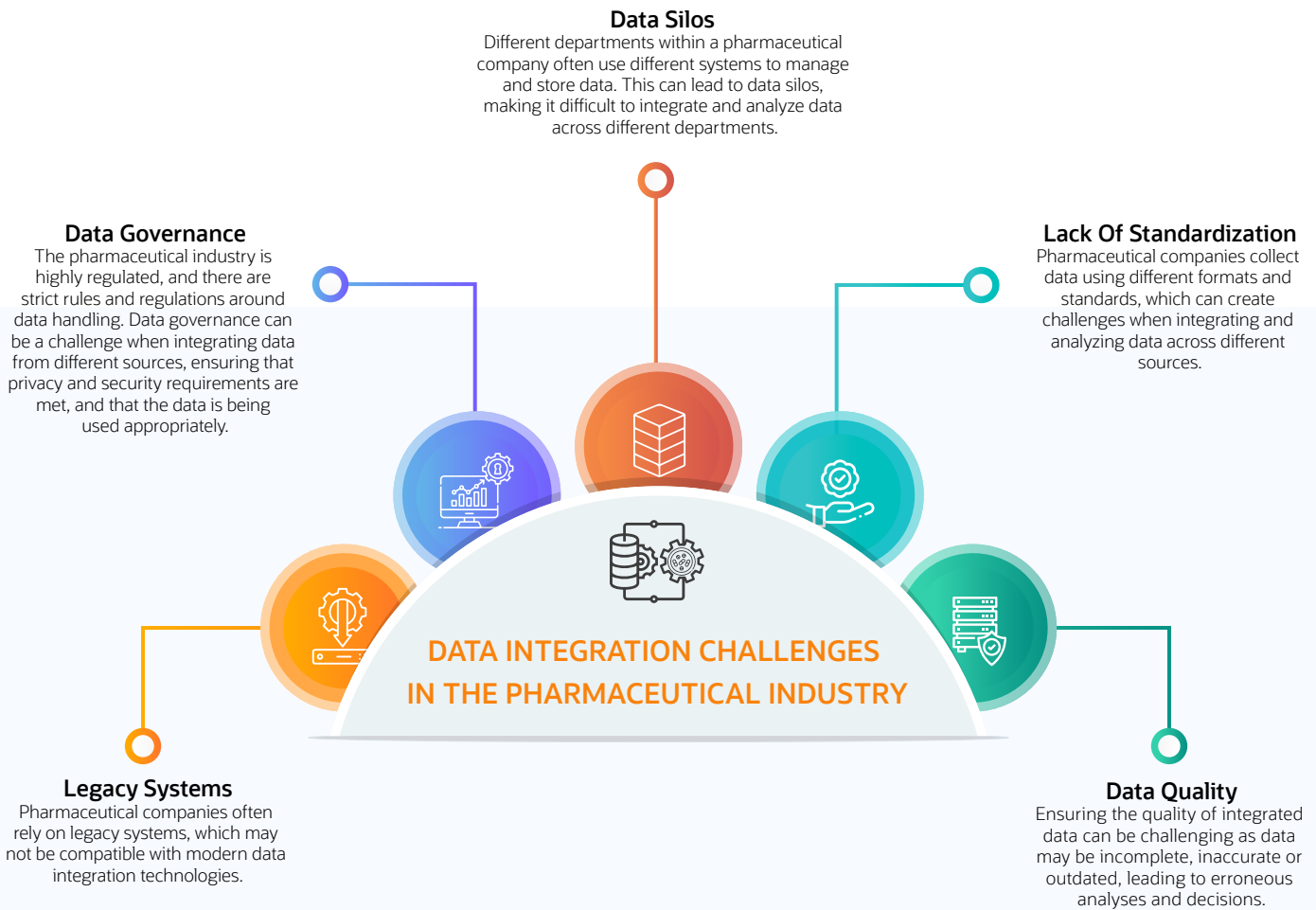
## Data integration in the Pharmaceutical Industry

The pharmaceutical industry develops, produces and markets drugs and medications to treat diseases and improve health outcomes. It is a highly competitive, research-intensive and regulated industry that requires significant investment in research and development, clinical trials, and regulatory approval processes. The process of drug development is lengthy and expensive, involving drug discovery, preclinical testing, clinical trials, regulatory approval, and marketing and distribution. Pharmaceutical companies collaborate with academic institutions and other industry partners to discover new drugs and therapies. Regulatory bodies, such as the FDA, play a crucial role in reviewing and approving new drugs. The pharmaceutical industry is essential in providing innovative treatments and therapies that improve the quality of life for people around the world.

### The Pharmaceutical Industry Faces Several Data Handling Related Problems, Including



**Data Integration** is a major challenge in the Pharmaceutical Industry due to the large Volumes of data generated from various sources such as clinical trials, research studies, electronic health records and real-world evidence.



To address these challenges, the pharmaceutical industry is investing in new technologies such as cloud-based platforms for integrations, data warehouses and application programming interfaces (APIs) that can help integrate and manage data from different sources. Additionally, the industry is exploring new data standards and collaboration with regulatory agencies to develop guidelines for data integration, sharing, and analysis.



## Understanding eZintegrations™ solution through use case in Pharmaceutical Industry

A leading pharmaceutical company has recently initiated a ground-breaking IT project that involves scanning human interface data and storing it in a Cloud Database. However, the company is currently struggling with the challenge of transferring this data from the Cloud Database to their REST API based database which is hosted on-premises. The main issue is finding a reliable, scalable and high-performance integration solution between the Cloud DB API and the on-premises DB API.

### The Challenge

The company has tried various approaches in the past but each solution had its own set of limitations. Building an in-house integration solution using their technical experts resulted in their team losing focus on their mainstream work and investing a significant amount of time and resources in developing new features for every attribute.

Investing in a vendor's iPaaS platform seemed like a viable option but it required a considerable amount of investment in licensing, implementation and maintenance. Moreover, creating a dedicated team of certified iPaaS developers was a time-consuming process that required a new pool of technical resources with data source and target expertise for every new integration.

Therefore, the company is currently seeking a robust integration solution that addresses their reliability, scalability and performance requirements without sacrificing their valuable resources and time. They need an integration solution that can seamlessly connect their Cloud DB API with their on-premises DB API without any data loss or security concerns.

The ideal integration solution should offer real-time data synchronization, ensuring that the data is always up-to-date. It should also be highly scalable and capable of handling large volumes of data without impacting the performance. The solution should be user-friendly, easy to deploy and maintain.

Additionally, they are also concerned about the other challenges that arise while integrating data such as requirement of strict data governance policies to ensure the security, privacy and compliance of data. This can include data access controls, data usage policies and data ownership rules. Also, data integration can involve large volumes of data from multiple sources. This can result in issues related to scalability, performance and storage. It may be necessary to use specialized tools or technologies to handle large volumes of data.

In conclusion, finding the right integration solution is critical for the company's success in leveraging the benefits of their new IT project. The company must carefully evaluate various integration solutions available in the market and select the one that best fits their specific requirements. There are various tools and technologies available for data integration but selecting the right tool can be challenging. Factors such as data sources, formats, complexity and scalability need to be considered when selecting a data integration tool.



## eZintegrations™ solution

The need for integrating data between cloud-based and on-premises databases is becoming increasingly important for companies of all sizes. With the growing adoption of cloud computing and the rise of SaaS applications, companies are looking for ways to connect and sync their data across different systems and platforms.

eZintegrations™ is a cloud-based iPaaS platform that offers a cost-effective and efficient solution for integrating data between different systems. The platform's no-code or low-code approach enables companies to perform integrations with minimal IT support, which reduces the burden on IT teams and saves time and resources.

The user-friendly interface with easy-to-use navigations makes it accessible to individuals with little technical expertise. It also has an enhanced feature of self-registration, owning and adding of other users to the platform in few minutes.

The platform is designed to connect to over 5000+ different SaaS applications and APIs, which provides companies with flexibility and versatility when integrating data between different systems. The platform's ability to transform, wrangle and orchestrate data between two systems, helps in streamlining the integration process. One of the biggest advantages of eZintegrations is its cost-effectiveness. The platform significantly reduces the extra investment costs incurred by companies to have their own iPaaS platform, which makes it an affordable solution for small and medium-sized businesses.

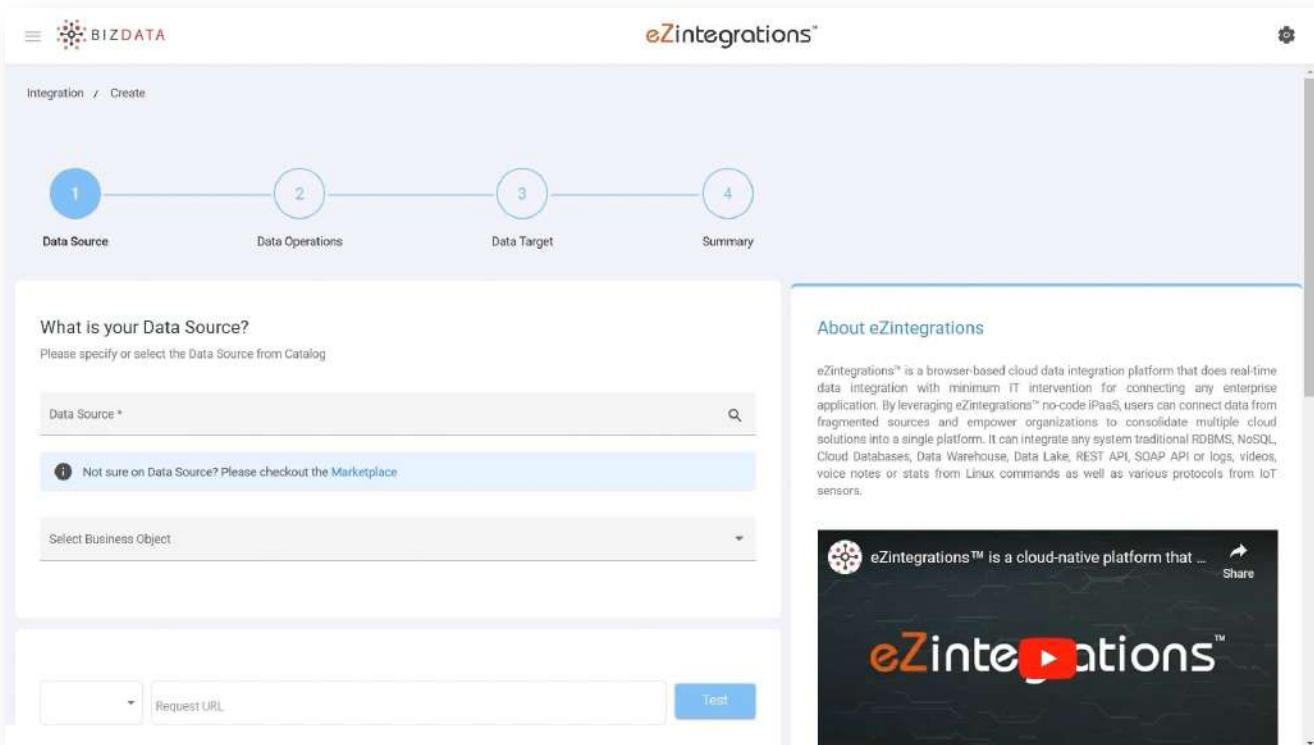
The latest release of eZintegrations™ includes an API marketplace that provides access to a large number of APIs in various categories. This feature makes it easier for users to find the required APIs and integrate them with just a few clicks without using a third party platform. Additionally, the platform comes with an API catalog, which helps users to understand the capabilities and functionalities of different APIs and make informed decisions on which APIs to use. It also comes with a marketplace for API for buying APIs and doing data transformation from source to target.

In conclusion, eZintegrations™ is an ideal integration solution for companies looking for a cost-effective, user friendly, and versatile way to integrate data between cloud-based and on-premises databases. The platform's no-code or low-code approach, coupled with its ability to connect to thousands of different SaaS applications and APIs, make it an efficient and effective solution for many integration needs. The platform's API marketplace and catalog make it easy for users to find and integrate the required APIs, which saves time and resources.

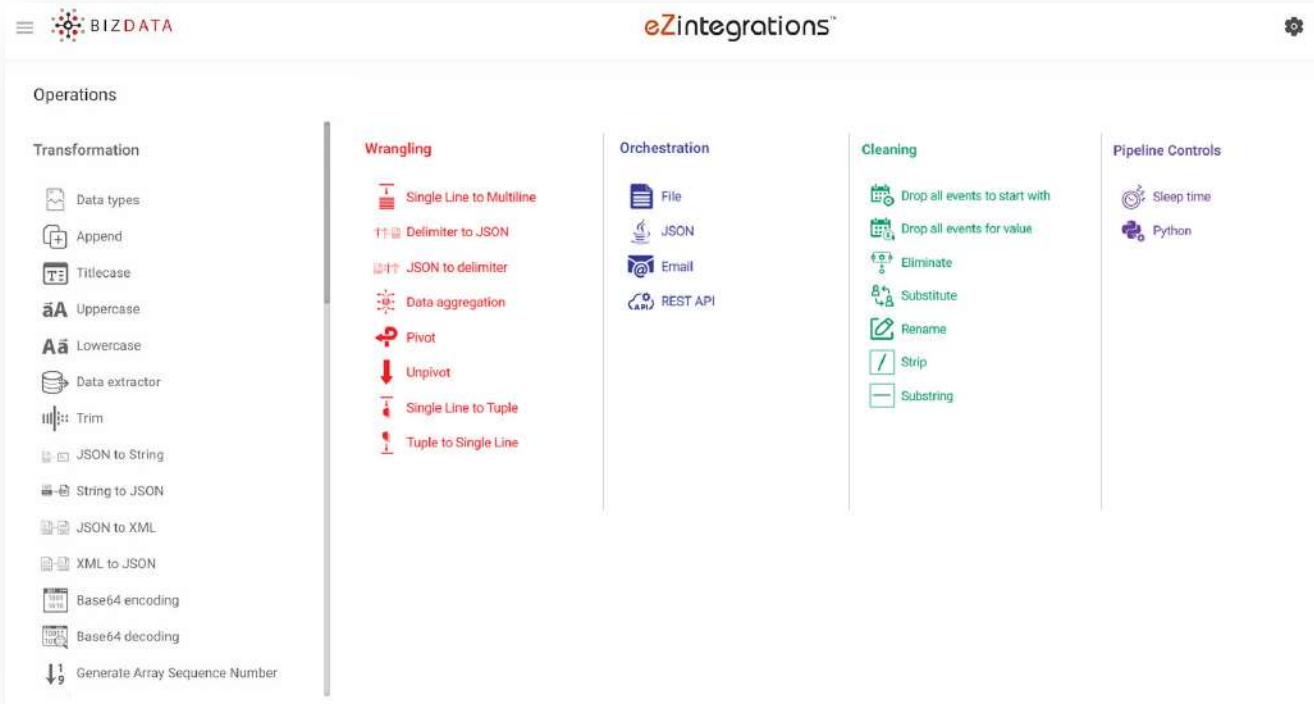


# Integration can be configured in simple steps using eZintegrations™.

1. Discover the source and add it to data source area to fetch the data.

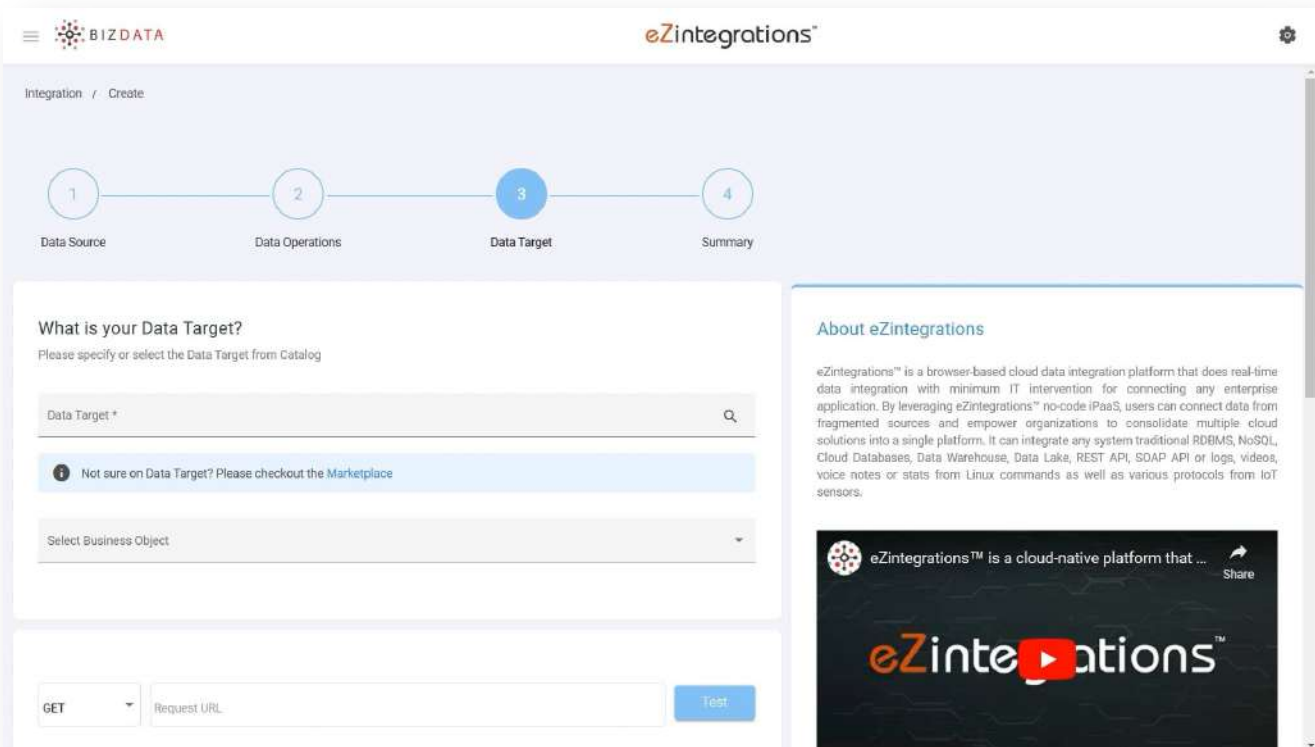


2. Through easy drag and drop feature perform the required data operation.

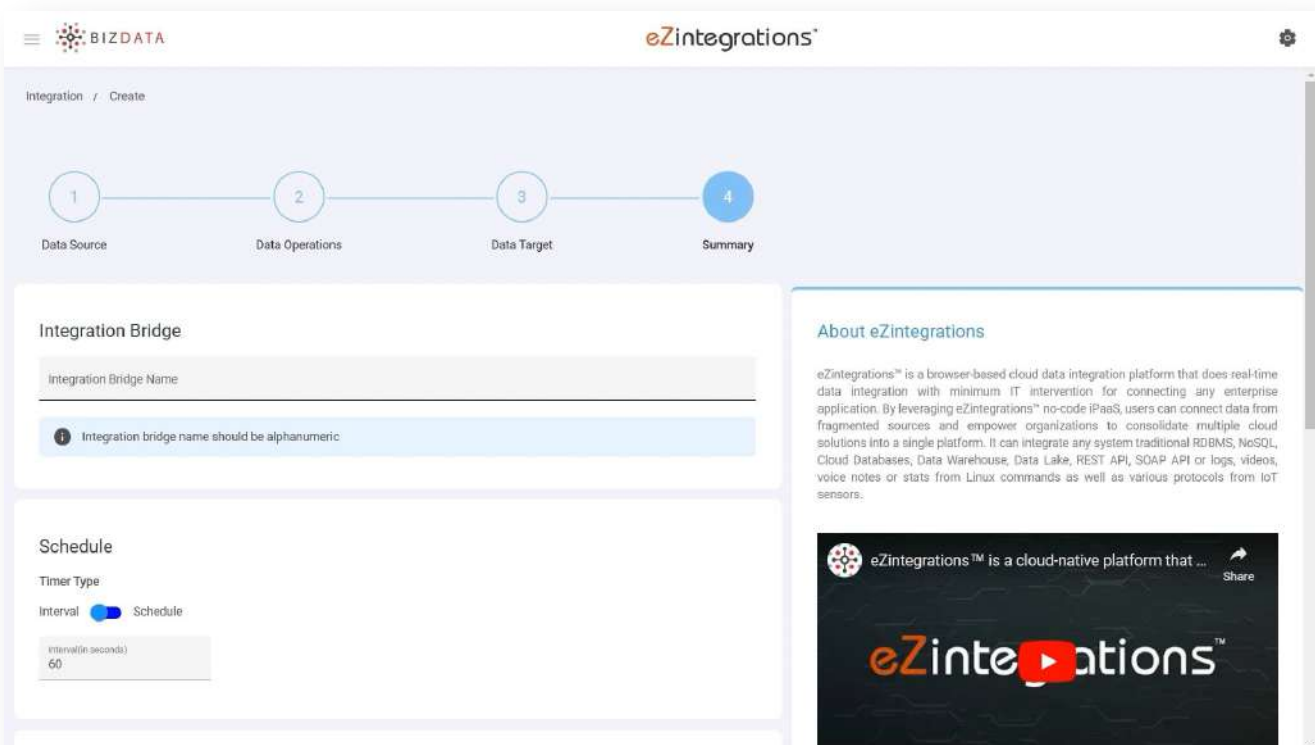


As seen above, various data operations are available and can be used with easy drag and drop.

### 3. Add data target where the data is supposed to be inserted.



### 4. Add other details such as name, integration frequency with ease on any frequency: real time, every 15 min, every X Minute, hourly, daily, weekly etc.



This creates integration bridge for streaming data between two systems over a pipeline.



[www.bizdata360.com](http://www.bizdata360.com)



[info@bizdata360.com](mailto:info@bizdata360.com) | +1. 650. 283. 1644

---

Copyright © 2023, Bizdata and/or its affiliates. All right reserved. The document is provided for information purpose only and the contents hereof are subject to change without notice. This document is not warranted to be error-free, not subject to any other warranties or conditions, whether expressed orally or implied in law, including implied warranties and conditions of merchantability or fitness of a particular purpose. We specifically disclaim any liability with respect to this document, and no contractual obligations are formed either directly or indirectly by this document. This document may not be reproduced or transmitted in any form or by any means, electronic or mechanical, for any purpose, without our prior written permission.

eZintegrations™ and Bizintel360 are registered trademarks of Bizdata and/or its affiliates. Other names may be trademarks of their respective owners.